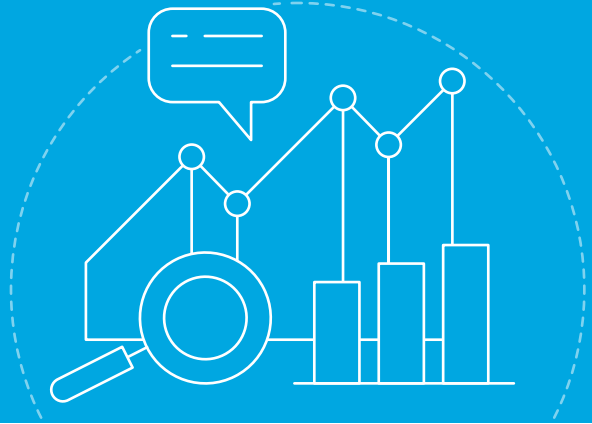


RSM'S POWER BI SERVICES

Providing more connectivity and insight into your volumes of valuable data



The explosion of data in recent years has created a unique challenge for businesses: how best to analyze and utilize all that info. Companies are swimming in data—some would say drowning—and they need a reliable solution that maximizes their metrics, gives them visibility into what is important and lets them easily share those insights across their organization.

THE POWER BI ADVANTAGE

Power BI provides that solution and so much more. Power BI is a collection of software services, apps and connectors that work together to turn unrelated sources of data into coherent, visually immersive, interactive insights.

Power BI allows you to easily connect your data sources—whether that's a single spreadsheet or a vast collection of cloud-based and on-premise hybrid data warehouses—then discover and analyze dynamic new insights. If you already use Office 365 and other Microsoft tools such as CRM or Business Central, Power BI is even easier to incorporate into daily practice, synchronizing across multiple systems and digesting data seamlessly.

BENEFITS OF POWER BI



Organization-wide self-service analytics



Variety of access points for reports—email, Power BI service, mobile application



Thorough understanding of data available for reporting



Monthly updates, improvements of Power BI



Single source of truth for all end users



Business decision-making driven through analytics, data points

Power BI reporting in a project

Define requirements

Design conceptual dimensional data model

ETL process—gather and clean data

Populate dimensional data model

Visualize data and gather insights

POWER BI AND RSM, THE PERFECT PAIRING

Power BI is an unquestionably valuable tool; however, partnering with a consulting firm like RSM that employs countless Power BI experts, Microsoft recognized Solution Architects and certified Power BI architects is the key to unlocking its full potential.

RSM has worked with Power BI since its launch. As an elite Microsoft Gold partner, RSM works closely with Microsoft on new developments, updates and implementations. RSM is in the trenches day-to-day, helping clients across multiple industries optimize Power BI for practical, real-world uses.

RSM/Power BI Case Study Impact

Working with a financial and business advisory services client, RSM helped implement Power BI, resulting in:



5 days

Reduction in lead time for executive reporting



58,291

Number of clients for which current and historical metric generation was automated

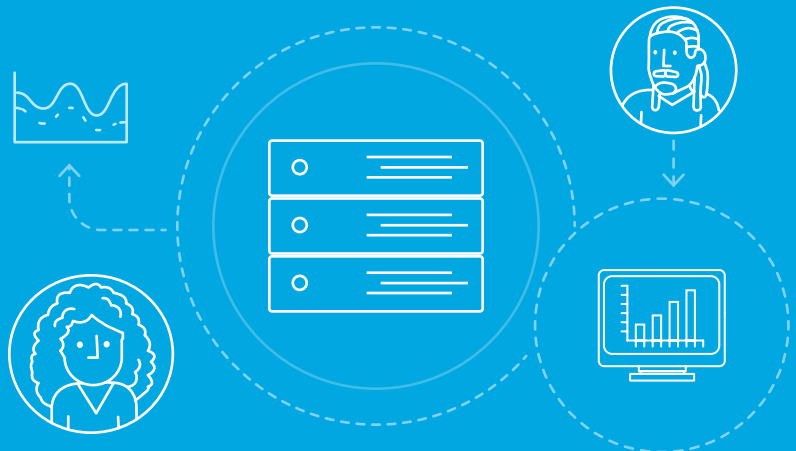
RSM's Power BI team is home to around 25 certified Power BI specialists—including three FastTrack Recognized Solution Architects—and an RSM-established Center of Excellence built around the delivery of Power BI as an overall reporting solution.

RSM's Power BI Professionals will walk through your current data solution and current business requirements to be able to apply Power BI's solution(s) to best fit your organization's needs and objectives. RSM provides Power BI support that can scale and grow with your company's needs as well as Power BI development, Power BI architecture and Power BI training services.

RSM understands both your business and its technical landscape and is here to help you implement the best Power BI solution for your goals—and the best solution for your resources.

For more information

on how Power BI and RSM can help your business achieve its data and analytics goals, call us at 800.274.3978 or visit rsmus.com/contact to send us a message.



+1 800 274 3978
rsmus.com

This document contains general information, may be based on authorities that are subject to change, and is not a substitute for professional advice or services. This document does not constitute audit, tax, consulting, business, financial, investment, legal or other professional advice, and you should consult a qualified professional advisor before taking any action based on the information herein. RSM US LLP, its affiliates and related entities are not responsible for any loss resulting from or relating to reliance on this document by any person. Internal Revenue Service rules require us to inform you that this communication may be deemed a solicitation to provide tax services. This communication is being sent to individuals who have subscribed to receive it or who we believe would have an interest in the topics discussed. RSM US LLP is a limited liability partnership and the U.S. member firm of RSM International, a global network of independent audit, tax and consulting firms. The member firms of RSM International collaborate to provide services to global clients, but are separate and distinct legal entities that cannot obligate each other. Each member firm is responsible only for its own acts and omissions, and not those of any other party. Visit rsmus.com/about for more information regarding RSM US LLP and RSM International.